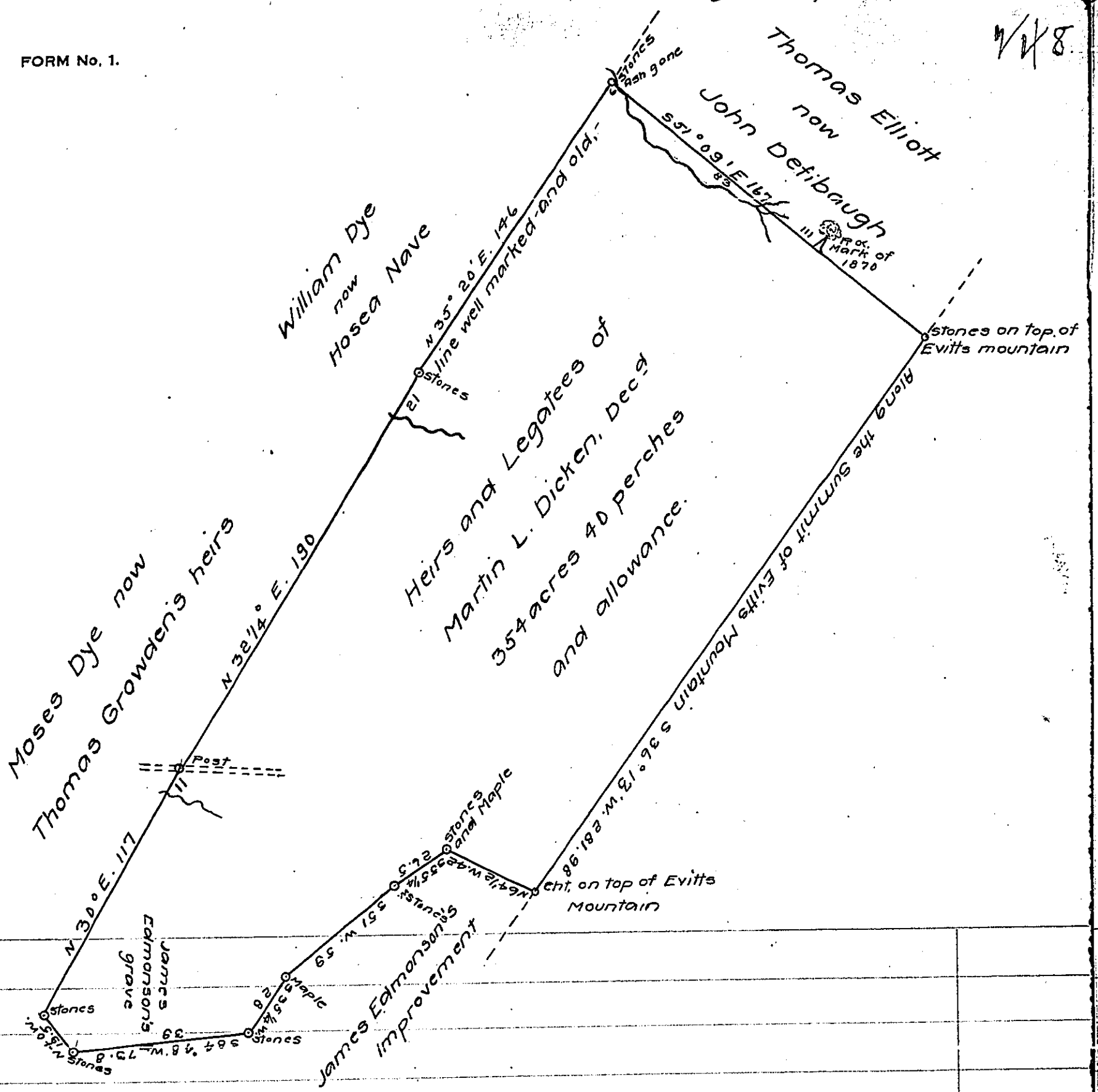


W/K 8



A Draft of a tract of land situated in the Township of Cumberland Valley and County of Bedford, containing three hundred and fifty four (354) acres, forty (40) perches and allowance of six per cent. for roads, etc. Surveyed the 12<sup>th</sup> 14<sup>th</sup> days of October, 1920 in pursuance of a warrant granted to James W. Jones, dated the ninth day of September 1870.

To James F. Woodward, } G. W. Cunard,  
Secretary of Internal Affairs } County Surveyor

Scale 60.  
IN TESTIMONY that the above is a copy of the original remaining on file in the Department of Internal Affairs of Pennsylvania, made conformably to an Act of Assembly approved the 16th day of February, 1833, I have hereunto set my Hand and caused the Seal of said Department to be affixed at Harrisburg, this sixteenth day of February 1921

*James F. Woodward*  
Secretary of Internal Affairs